

Ready

- Provide defensible space around structures for a distance of at least 100 feet
- Clear flammable materials from rain gutters and roof
- Trim tree branches at least 10 feet from chimney
- Clear at least 10 feet around propane tanks
- For more information on legal requirements, see www.firedepartment.org
- Replace flammable vegetation with less flammable plants
- Use fire-resistant materials for roofing and siding
- Move wood piles away from house
- Make sure your water tank is full and the hydrant is accessible and marked with a blue reflector
- Have garden hose and ladder available that will reach the roof
- Locate escape routes and Temporary Refuge Areas (See map inside)
- Have an escape plan; Know where to meet your family
- Choose an out-of-area friend or relative as a check-in contact; Write their phone number on the phone list inside

Set

- Evacuate as soon as you are set
- Alert family and neighbors
- Dress in appropriate clothing (examples: long pants, long sleeved shirt, goggles or glasses, hat and a dry bandana/cloth over your face; Cotton clothing is best)
- Ensure that you have your emergency supply kit on hand that includes all necessary items, such as battery powered radio, spare batteries, emergency contact numbers, and ample drinking water
- Tune in to any local radio or TV station for updates and information
- Remain close to your house, drink plenty of water, and keep an eye on your family and pets until you are ready to leave

CHECKLIST:

What to do if a wildfire is approaching

- Park vehicles facing outward.
- Put valuables, important documents and essentials, such as medications, in your vehicle.
- Keep keys where you can find them.
- Close shutters, windows, heavy drapes and fireplace dampers.
- Remove thin drapes and other flammables near windows.
- Turn on outside lights and leave some inside lights on.
- Turn off gas at meter or propane tank.
- Safely make your way out of the area.
- If unable to evacuate completely, go to the closest Temporary Refuge Area if nearby and can safely make it there.
- Drive with headlights on.

GO!

- Citizens may be notified by fire personnel and/or law enforcement personnel if evacuation is necessary
- Safely make your way out of the area; If unable to evacuate completely, go the closest Temporary Refuge Area (See map inside)
- The Red Cross will establish evacuation centers
- If evacuated, contact the Red Cross to provide information about your status so that family or friends can be informed
- After an area has been evacuated, the area will remain closed until the threat has passed
- **MOST IMPORTANTLY**, if you feel unsafe, don't wait; follow the checklist items and **Get Out!**



San Ramon Valley Fire Protection District
1500 Bollinger Canyon Road
San Ramon, CA 94583

BLACKHAWK FIRE EVACUATION PLAN

Ready...Set...Go!

Wildfire Safety Information



10/07/2019

If You Become Trapped

In your home:

- * Stay inside until the fire passes
- * Close all windows
- * Keep all doors closed, but unlocked
- * Keep your family together and remain calm
- * Remember, if it gets hot inside your house, it will be much hotter outside

In your car:

- * Park away from vegetation
- * Roll up windows
- * Cover mouth with dry cloth to protect airway
- * Cover yourself with a blanket or jacket
- * If the vehicle catches on fire, exit after the wildfire has passed

On foot:

- * Find an area away from vegetation
- * Lie face down
- * Cover mouth with dry cloth to protect airway

After the Fire Passes

- * Check the roof and exterior of your home, extinguish all sparks and embers
- * Check your attic for hidden embers
- * Check your yard for burning wood piles, trees, fence posts and other materials

Returning to Your Home

- * Emergency Managers will decide when it is safe to return
- * Information will be available through the media, at road blocks, shelters, the CAL FIRE information and www.firedepartment.org

Scan this Quick Response (QR) Code for a digital version of this evacuation map.



BLACKHAWK

Emergency Travel Routes and Temporary Refuge Area



Temporary Refuge Areas

A gathering for residents in close proximity

Use if evacuation routes are obstructed by smoke, incoming emergency equipment, or directly threatened by fire

If not accessible, use the following as a last resort: behind a retaining wall, inside a structure, a large lawn or parking area, or the cab of a vehicle

IDENTIFIED AREA



**Blackhawk Country Club
Golf Course Open Space**

599 Blackhawk Club Dr.
Danville, CA 94506

When evacuations are requested or ordered, quickly leave the area and make room for responding emergency equipment

Fire engines, ambulances, and law enforcement need room to move

**Life Threatening
Emergencies:**

**Dial
911**

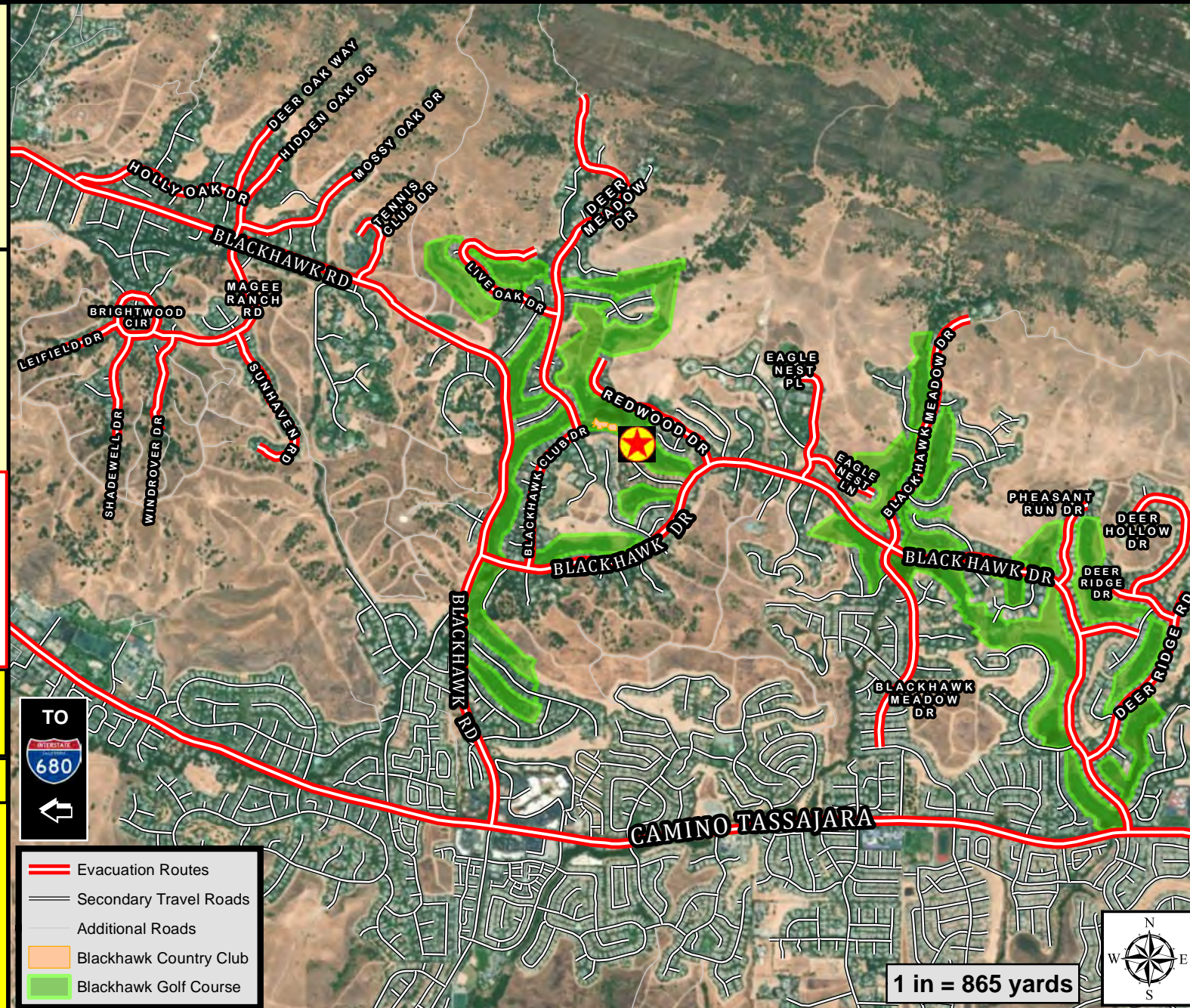
Non-Emergency Numbers

San Ramon Valley
Fire Protection District (925) 838-6640

Danville PD/
Contra Costa Sheriff (925) 646-2441

Animal Control (925) 608-8400

Red Cross (415) 427-8000



- Evacuation Routes
- Secondary Travel Roads
- Additional Roads
- Blackhawk Country Club
- Blackhawk Golf Course

1 in = 865 yards

